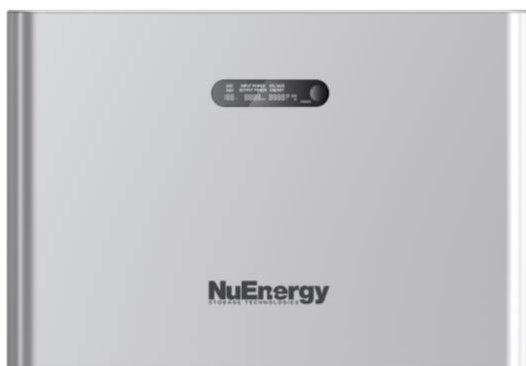




# NuPower NX5 Series

NUE161SPBX100XA

V2



Voltage 51.2 V

Capacity 5.12KWh



# NX5 Series Convenience



silver
  XBG
  black



## PLUG&PLAY

Convenient and easy to install



## FLEXIBLE

Modular rack design for easier installation and smaller landscape



## INTELLIGENT BMS

Intelligent BMS to ensure a safe reliable operation



## SAFE AND RELIABLE

Adopt high safety, long lifetime, excellent performance prismatic cells



## LONG LIFESPAN

Over 3000X cycle life



## INTERCONNECTION

Multiple communications including RS485, CAN



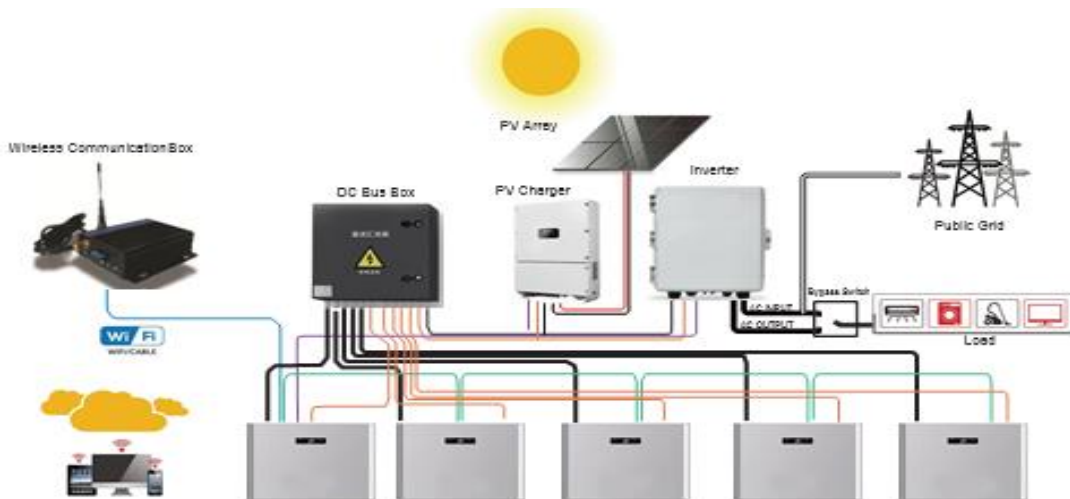
## PERFECT MATCH OF ENERGY STORAGE INVERTER

Compatible with various brands of energy storage inverters

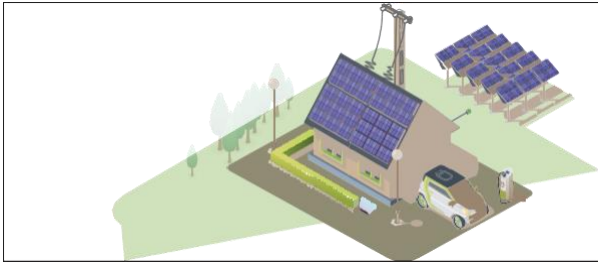


## EXPANDABLE

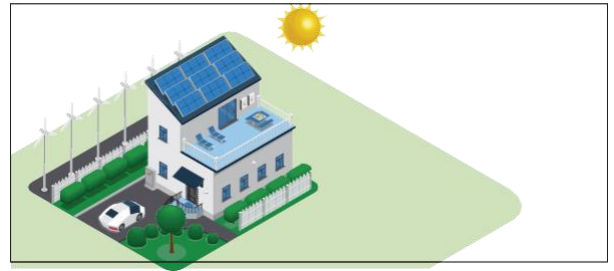
Parallel on cabinet level available



# NX5 Series Applications



**Residential grid-tie solar with backup power**  
Secure power for your home during grid outages by retrofitting your grid-tied system with backup power using proven NuEnergy Solutions.



**Self-consumption**  
Extra PV power for battery and charging. When PV power is low or empty, load consumption should take power from the battery first, and from the grid as little as possible.



**Off-grid power supply**  
Cut your peak consumption and save money by reducing loads. When the grid is offline, the storage system should automatically switch to off-grid power in less than 1s, for external emergency load powering.



**Backup power**  
Respond to external power controls in less than 1s, which is sufficient for frequency regulation and peak saving among residential/commercial areas.

## Compatible inverter Brands



# NX5 Series Specifications

| Model                             | NX5 Series   |
|-----------------------------------|--|
| Battery Type                      | LiFePO4  |
| Energy                            | 5120Wh   |
| Rated Capacity                    | 100Ah  |
| Rated Voltage                     | 51.2V  |
| Battery cell                      | 3.2V 100Ah Prismatic Battery Cell  |
| Configuration (*S*P)              | 16S1P  |
| Discharge Cut-off Protect Voltage | 40V  |
| Charge Cut-off Protect Voltage    | 58.4V  |
| Max. Charge Current               | 100A   |
| Max. Discharge Current            | 100A   |
| Communication Port                | CAN, RS485   |
| Compatible Inverter Brand         | SMA, Schneider, Victron, Studer, SunSynk, Growatt, GoodWe, Sofar, Ginlong/Solis, Sermatec, Sol-Ark, and more |
| Configuring in Parallel           | Max. 63 units in Parallel; up to 322.5 kwh.  |
| Cycle life                        | 100% DOD; 3000 times   |
| L*W*H (mm)                        | 600*480*135  |
| Net Weight (KG)                   | 58KG   |
| Cooling                           | Natural cooling  |
| Environment                       | Indoor   |
| Mounting options                  | Floor or wall mount  |
| Discharge Temperature (°C)        | -10°C~+60°C  |
| Charge Temperature (°C)           | 0°C~+45°C  |
| Storage Conditions                | -20°C to 30°C (-4°F to 86°F)<br>Up to 95% RH, non-condensing<br>State of Energy (SoE): 25% initial           |
| Maximum Elevation                 | 3000m(9843ft)  |



## NuPower Series NX5

